

# K6

*Dual-frequency Handheld Receiver*



Laser centering



Beidou



High accurate positioning



Industrial 3-proofings



Bluetooth



Wireless



Touch screen



HD Camera



Network module

- \* HD large 5-inch touch screen which fulfill the Android users needs
- \* Android version supports multiple languages switch
- \* Octa-Core 1.5GHz processor
- \* Micro-USB port and OTG function
- \* Being equipped with laser centering component
- \* Multiple sensors and more extended functions

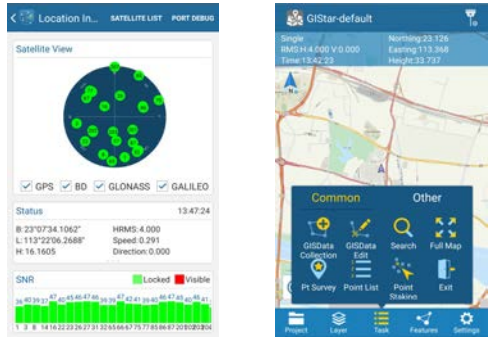




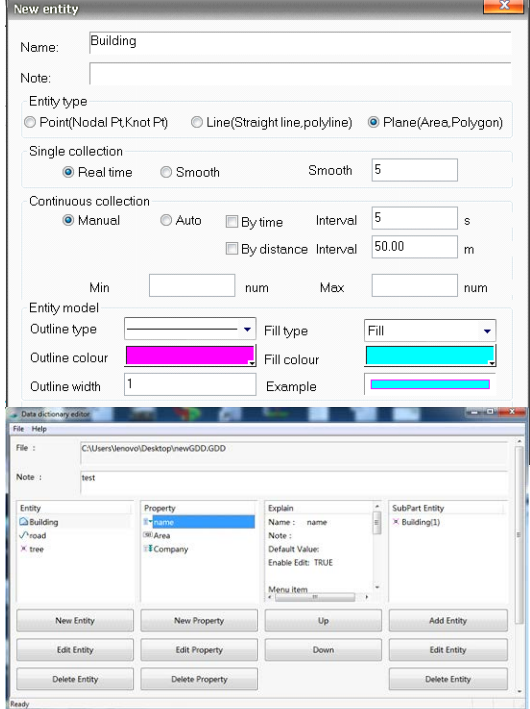
Specifications		
<b>System</b>	Operation system	Android 5.1
	Processor	Octa-Core 1.5GHz
	Storage	3GB RAM
		32GB ROM Up to 128G extensible through SDHC card
<b>GNSS</b>	Channels	336
	GNSS	GPS (L1,L2 ) GLONASS( L1,L2) BDS GALILEO and RTX(Optional)
	Data output	NEMA-0183
	I/O protocol	RTCM2.3(1, 3, 9), RTCM31 etc.
	Update rate	1Hz
	Reacquisition	<1s
	Cold start	<30s
	Antenna	Internal dual frequency antenna
	L-band	Optional
	Accuracy	SBAS : 0.50m Horizontal 0.85m Vertical DGNSS : 0.25m±1ppm Horizontal 0.50m±1ppm Vertical Single base line RTK(<30km) : 0.008m±1ppm Horizontal 0.015m±1ppm Vertical
Others	Laser centering, external antenna port	
<b>Multimedia</b>	Camera	8.0 megapixel AF, flashlight
	Display	Capacitive screen 5.0' scratch resistable and sun readable 1280×720
	Sensor	Electronic compass, gravity sensor, built-in thermometer, atmospheric pressure altimeter, light sensor and distance sensor (optional)
	other function	Integrated speakers and microphone
	Extended function (optional)	Scanning head, NFC, backtalk, Fingerprint identification
<b>Communication</b>	network	LTE
	Bluetooth	BT4.0 downward compatible to BT2.1+EDR
	WIFI	IEEE 802.11 b/g/n
	USB	Micro B type Support USB charging and OTG function
<b>Electrical</b>	Battery	Changeable 3.7V,7200mAh Li-Ion,2 batteries (standard)
	Battery life	Single battery> 10 hrs
	Battery charging	2 stands charger, 4 hrs fast charging; supports car-charger and charge pal
<b>Environment</b>	Waterproof/Dustproof	IP68
	Shockproof	1.5m
	Temperature	SStorage temp:-40°C~80°C Operating temp:-40°C ~70°C
<b>Physical property</b>	Size	231×92×57mm
	Weight	677g (battery included)

### Software

**GISStar** (for Android) Completely new professional Android integrate GIS application, which adopts GIS technology to collect and manage geographic data. GISStar takes advantage of the Android touch screen capability by allowing you to tap the points and lines in your drawing to open tool bars with all the function you need instantly. It also supports various data format import and export, such as shp file, dxf file, kml file and gpx file, which fully meets the demands of different of users.



**Data Dictionary Editor:** A windows software that helps pre-define the GIS entity. With this software, we can describe and manage the properties of each entity. After that we just need to copy the \*.GDD file which saved from Data Dictionary Editor into K6 internal storage, and then field work will be efficient and faster with GISStar.



### GUANGDONG KOLIDA INSTRUMENT CO., LTD.

Add: 7/F, South Geo-information Industrial Park, No.39 Si Cheng Road, Tian He IBD, Guangzhou 510663, China  
 Tel: +86-20-22139033 Fax: +86-20-22139032  
 Email: export@kolidainstrument.com market@kolidainstrument.com http://www.kolidainstrument.com