

# KL-15 | KL-07

Rugged & Portable Digital Level



## Simple, Fast and Accurate

- 1.5mm precision for DL-15/ 0.7mm precision for DL-07
- 110m distance measurement
- Magnetic damping Compensator
- Onboard measurement and recording programs
- 20,000-point memory & SD card slot
- Ideal for construction and general applications

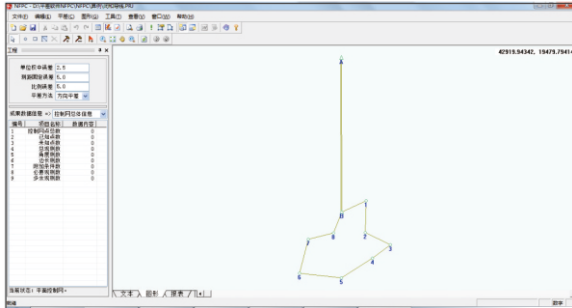
## User friendly & Practical

**Automatic reading:** Minimize human errors, no more misreading

**Higher Accuracy:** Averaging mode for more accurate results

**Rapidity:** Shorten the measuring time by a half

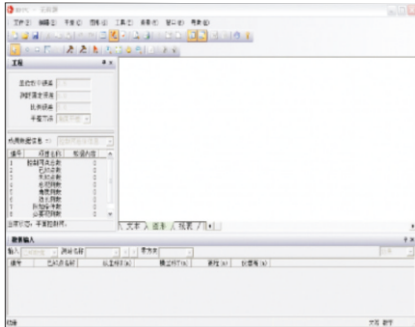
**Auto Save:** Internal memory storage or SD card memory optional, paperless working.



### Powerful Post-processing Software

It contains adjustment routines for dynamic adjustment of horizontal & vertical control network and angle & direction adjustment.

Easily zoom in or out to see the overall data in graphic.



### Seamless Transfer with Various Data Formats

Station	SD_Length	Acc/SightDist.Length	SD_Off	d	HeightDiff
1	35.2335	35.2335	0.1135	0.1135	
2	54.682	89.9155	-0.262	-0.1485	
3	48.915	138.8305	-0.937	-1.0855	
4	35.088	173.9185	-0.458	-1.5435	
5	37.1895	211.1080	-0.6915	-2.2350	
6	55.139	266.2470	0.731	-1.5040	
1	55.1430	55.1430	-0.7300	-0.7300	
2	37.1975	92.3405	0.5835	-0.1465	
3	35.1025	127.4430	0.4855	0.3390	
4	48.9055	176.3485	1.0975	1.4365	
5	54.6470	230.9955	0.2240	1.6605	
6	35.2170	266.2125	-0.3050	1.3345	

### Precision Analysis & Report

The KL Data Download & Processor Software, makes the field work easier to display the complex leveling tasks.

## Specifications

Item		KL-07	KL-15
Height Accuracy (standard deviation for 1km double run leveling)	Digital Reading	0.7mm	1.5mm
	Optical Reading	2.0mm	
Distance Accuracy	Digital Reading	D≤10m:10mm;D>10m:D*0.001	
Distance Range	Digital Reading	2m~110m	
Minimum Display	HD	0.1mm/1mm	
	Distance	0.1/1cm	
Measuring Time		within 3s in normal condition	
Telescope	Magnification	32X	
	Resolving Power	3"	
	Field of View	1°30'	
	Multiple Constant	100	
	Additive Constant	0	
Compensator	Type	magnetic-damping	
	Range	>±12'	
	Accuracy	0.30"/1'	0.50"/1'
Data Storage	Storage	16MB, 20,000 points	
	Point Name	increasing/decreasing/customized	
	Connection	USB	
	External Storage	SD Card	
Circular vial Accuracy		8'/2mm	
Display		160*64dpi LCD with illumination	128*32dpi LCD with illumination
Working Temperature		-20°C~50°C	
Dimension		230mmX150mmX210mm	
Weight		2.5kg	
IP Standard		IP55	

ITALGEIN SRL  
[www.italgein.it](http://www.italgein.it)  
[info@italgein.it](mailto:info@italgein.it)  
 cell. 3296150283

**KOLIDA**

Professional's Choice